

Suicide in Ohio

FAST FACTS

- From 2007 to 2018, the number and rate of suicides increased.
- In 2018, there were 1,836 suicides.
- Since 2014, the rate among black, non-Hispanic and white, non-Hispanic males increased 53.8% and 24.0%, respectively.
- In 2018, adults 45-64 years of age had the highest rate of suicide, followed by adults 25-44 years.
- From 2007 to 2018, the rate of youth suicide (10-24 years) increased 64.4%, from 7.3 to 12.0 deaths per 100,000.
- Males are disproportionately burdened by suicide across the lifespan. Overall, the suicide rate among males is nearly 4 times the rate among females.

Suicide and intentional self-harm are major public health problems. In 2018, suicide was the 11th leading cause of all death in Ohio among all ages, the leading cause of all death among Ohioans 10-14 years of age and the second leading cause of all death among Ohioans 15-34 years. Suicide accounted for 17.5% of all injury-related deaths in 2018 and was the second leading injury-related cause of death among Ohioans 15 years and older.

From 2007 to 2018:

- suicide deaths increased 44.8%, from 1,268 to 1,836.
- the age-adjusted suicide rate increased 40.7%, from 10.8 to 15.2 deaths per 100,000 people.

Figure 1. Number and Age-Adjusted Rate of Suicide, Ohio, 2007–2018

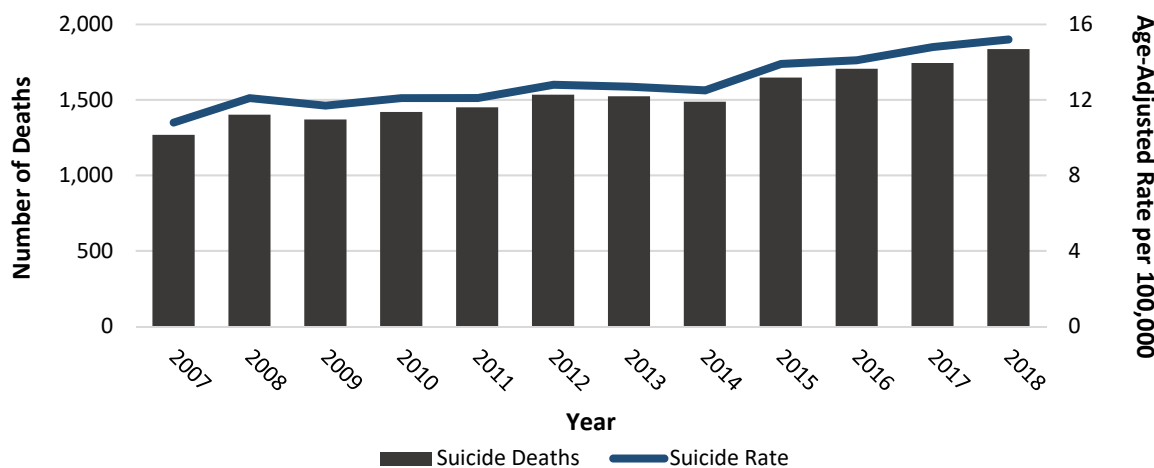
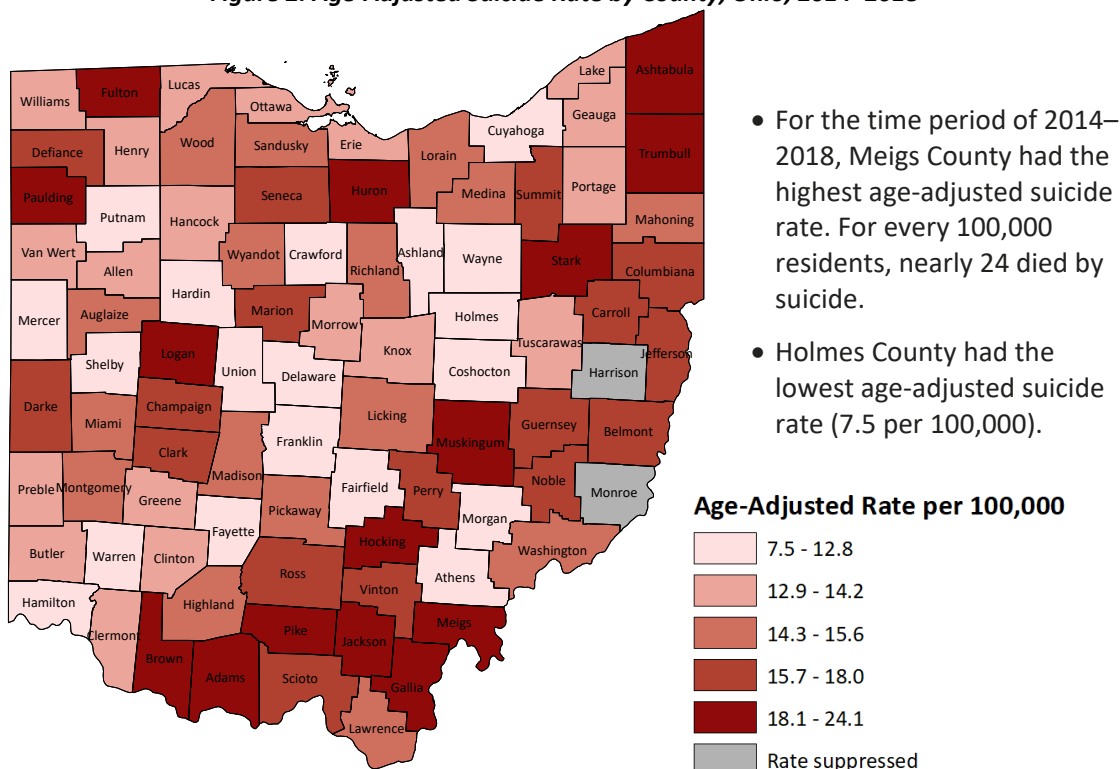


Figure 2. Age-Adjusted Suicide Rate by County, Ohio, 2014–2018



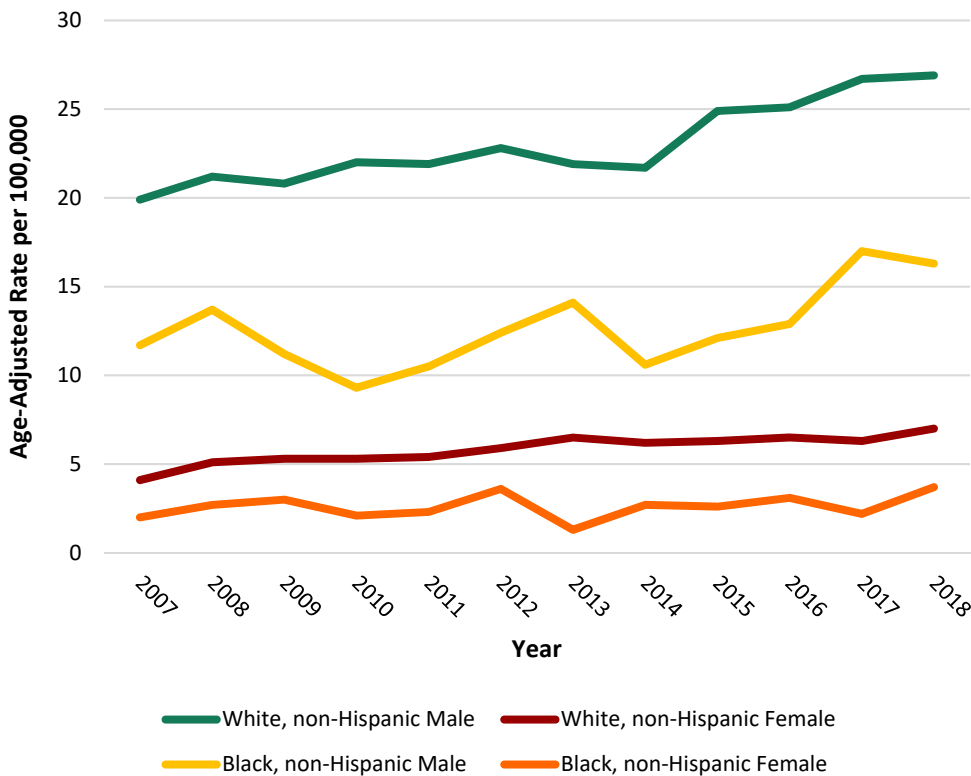
RESOURCES



- Crisis Text Line
Text "4HOPE" to 741741

Trends by Demographic

Figure 3. Age-Adjusted Suicide Rate by Race/Ethnicity and Sex, Ohio, 2007–2018



From 2007 to 2018, the overall age-adjusted suicide rate among all race/ethnicity and sex categories represented in Figure 3 have increased.

Rates are highest among white, non-Hispanic males.

Since 2014, the age-adjusted rate of suicide among white, non-Hispanic and black, non-Hispanic males increased dramatically.

- The rate among black, non-Hispanic males increased 53.8%, from 10.6 in 2014 to 16.3 deaths per 100,000 in 2018.
- The rate among white, non-Hispanic males increased 24.0%, from 21.7 in 2014 to 26.9 deaths per 100,000 in 2018.

*Race/ethnicity categories are mutually exclusive. Specified race (white, black, other) excludes Hispanic ethnicity. Other race/ethnicity groups not shown due to small numbers.

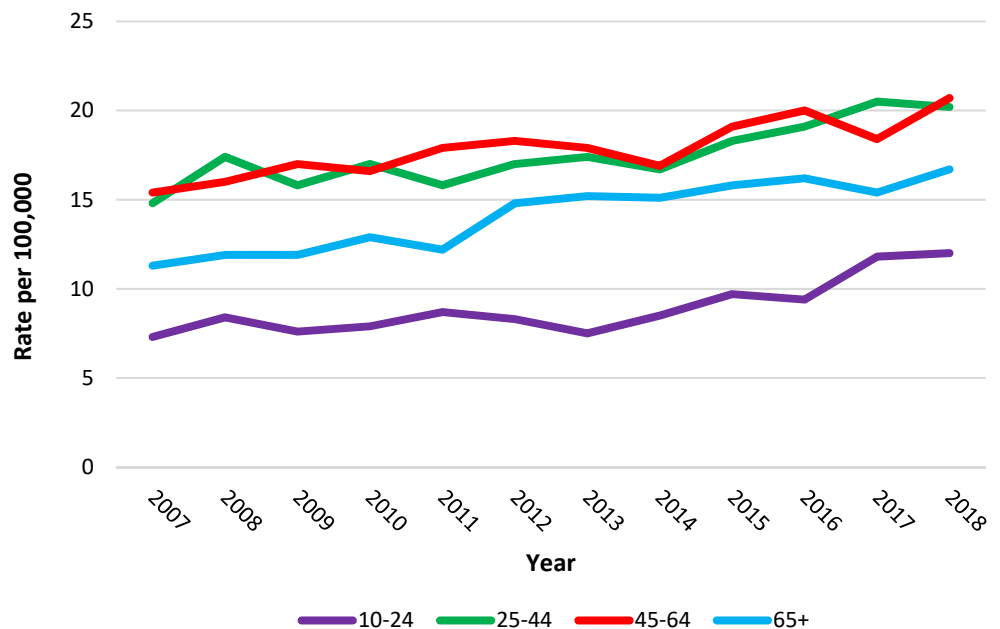
**In Ohio, five people die by suicide every day.
One youth dies by suicide every 33 hours.**

Figure 4. Crude Suicide Rate by Age Group, Ohio, 2007–2018

In 2018, adults 45-64 years of age had the highest rate of suicide, followed by adults 25-44 years.

From 2007 to 2018, the rate of:

- youth suicide (10-24 years) increased 64.4%, from 7.3 to 12.0 deaths per 100,000.
- adult suicide among 25-44 year olds increased 36.5% (14.8 to 20.2) and among 45-64 year olds increased 34.4% (15.4 to 20.7).
- older adult suicide (65+ years) increased 47.8%, from 11.3 to 16.7 deaths per 100,000.



Age and Sex

- In 2018, there were 387 suicides among females (21.1%) and 1,449 suicides among males (78.9%).
- Males are disproportionately burdened by suicide across the lifespan.
- Males 55-64 years of age had the highest number of suicide deaths, while the rate is highest among males 75 years and older.

Figure 5. Number of Suicides by Age and Sex, Ohio, 2018

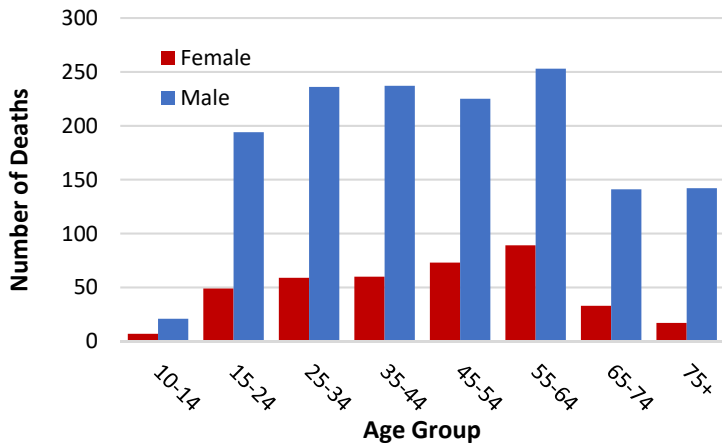
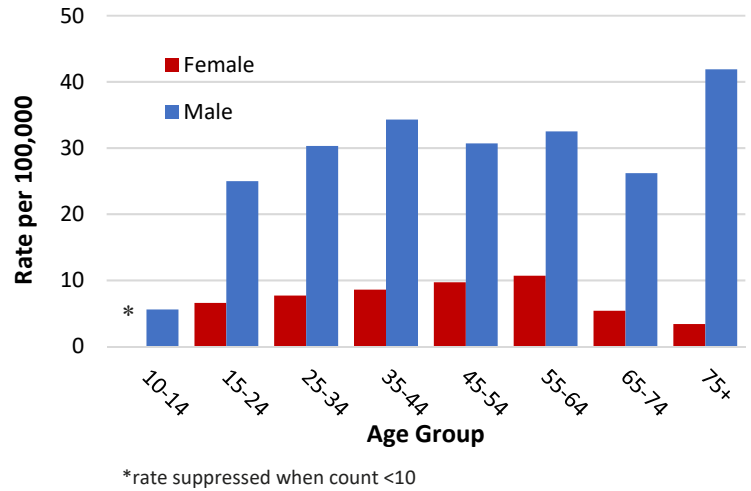


Figure 6. Suicide Rate by Age and Sex, Ohio, 2018



Mechanism

- From 2007 to 2018, the number of suicides by suffocation (e.g. hanging) increased 75.0% (from 300 to 525), suicides by firearm increased 48.5% (from 647 to 961), and suicides by drug overdose remained relatively steady (from 154 to 156).
- In 2018, firearm was leading mechanism of suicide among both females and males, accounting for one-third of female suicides and more than half of male suicides.
- Among females, suicide by drug overdose accounted for 24.8% of deaths compared to only 4.1% among males.

Figure 7. Number of Suicides by Mechanism, Ohio, 2007–2018

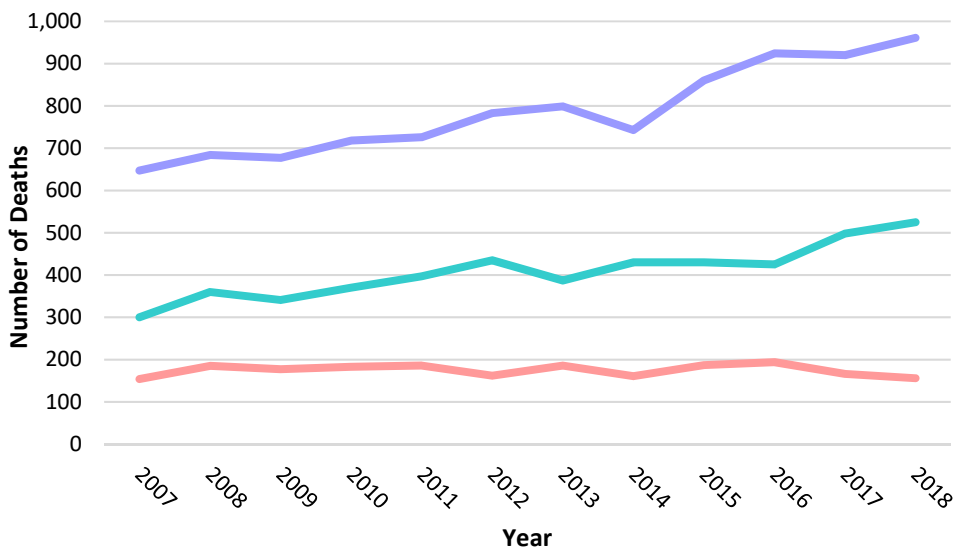
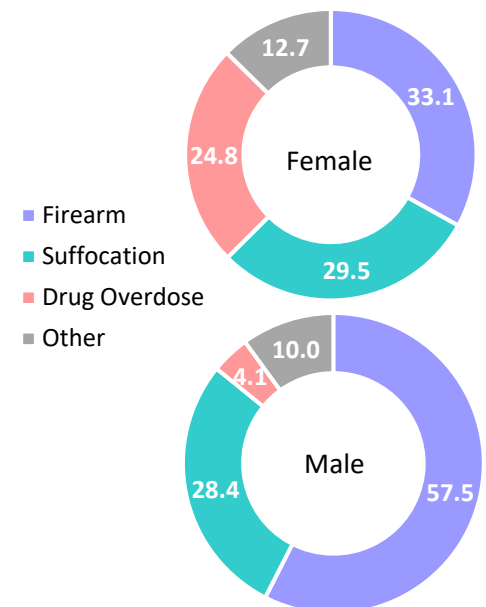


Figure 8. Percent of Suicides by Mechanism and Sex, Ohio, 2018



Source: Ohio Department of Health (ODH) Bureau of Vital Statistics; analysis conducted by ODH Violence and Injury Prevention Section. Analysis includes Ohio residents with any of the following ICD-10 codes as the underlying cause of death: X60-X84, Y87.0, U03. Rates calculated per 100,000 population. Age-adjusted rates are based on the 2000 U.S. standard population.

2007–2018 Demographic Summary

Table 1. Number of Suicides by Year and Demographic Characteristic, Ohio, 2007–2018

Demographics	2007	2008	2009	2010	2011	2012	2013	2014	2015	2016	2017	2018	Rate*
	#	#	#	#	#	#	#	#	#	#	#	#	
Age													
5-9	0	0	1	0	0	0	1	0	0	0	2	0	--
10-14	8	15	14	6	9	18	14	25	14	17	25	28	3.8
15-24	166	186	167	180	197	177	161	172	210	198	244	243	16.0
25-34	193	223	198	246	228	233	244	221	258	302	296	295	19.1
35-44	252	293	262	245	225	254	256	258	269	251	301	297	21.3
45-54	283	308	330	317	334	324	316	295	335	305	308	298	20.1
55-64	190	188	206	216	243	263	253	242	271	327	268	342	21.2
65-74	80	103	100	108	101	122	137	148	146	160	146	174	15.1
75+	96	86	92	102	100	131	129	124	145	146	154	159	18.8
Sex													
Female	228	285	288	291	291	318	336	325	339	365	328	387	6.3
Male	1,040	1,117	1,082	1,129	1,146	1,204	1,175	1,160	1,309	1,341	1,416	1,449	24.8
Race/Ethnicity													
White, non-Hispanic	1,159	1,256	1,252	1,309	1,320	1,381	1,364	1,338	1,494	1,533	1,546	1,632	16.7
Black, non-Hispanic	92	111	92	79	87	109	107	95	103	118	138	150	9.8
Other, non-Hispanic	7	14	9	11	15	10	17	27	20	29	27	18	5.0
Hispanic	10	21	17	21	13	19	18	22	22	23	27	31	7.1
Race/Ethnicity and Sex													
White, non-Hispanic Female	211	255	261	265	269	287	321	292	305	329	297	346	7.0
White, non-Hispanic Male	948	1,001	991	1,044	1,051	1,094	1,043	1,046	1,189	1,204	1,249	1,286	26.9
Black, non-Hispanic Female	15	20	22	16	17	26	11	21	20	24	17	31	3.7
Black, non-Hispanic Male	77	91	70	63	70	83	96	74	83	94	121	119	16.3
Hispanic Female	1	5	2	5	2	4	3	3	8	2	5	6	--
Hispanic Male	9	16	15	16	11	15	15	19	14	21	22	25	10.7
Total	1,268	1,402	1,370	1,420	1,451	1,534	1,524	1,488	1,648	1,706	1,744	1,836	15.2

Source: Ohio Department of Health (ODH) Bureau of Vital Statistics; analysis conducted by ODH Violence and Injury Prevention Section. Analysis includes Ohio residents with any of the following ICD-10 codes as the underlying cause of death: X60-X84, Y87.0, U03. Due to missing demographic information, demographic categories may not sum to total.

*Race/ethnicity categories are mutually exclusive. Hispanic includes any race. Specified race (white, black, other) excludes Hispanic ethnicity. Other race includes American Indian and Asian/Pacific Islander.

†Rates presented for age groups are age-specific. Rates presented for sex and race/ethnicity are age-adjusted to the 2000 U.S. standard population.

Rates calculated per 100,000 population and suppressed when counts <10.